

The Carmel Valley
PROSPECTOR!
March 2011 Volume 51, Number 3

PRESIDENT'S MESSAGE

Hi everyone!

I just returned from a show in Ventura and am still basking in the glow of my Tucson experience which I will share with you in a slide show (Cynthia Franco is teaching me how to do it!) at the March 11 meeting. Anyone that went to Tucson, if you have some 'show and tell' items, please bring them to the March meeting. We will have a future Tucson 'show & tell' because some of our members that purchased some great things will be showing it at the Turlock Gem Show the day of our March meeting...Talma, Jay and the Biewers.

I want to thank Talma and the Francos for their great Feb program....wish I could have been there! Seeing others experience the joy of field collecting just inspires me to embrace this hobby! I would love to have more field trips, but we need input from you all as to good locations somewhat nearby. And I'm so grateful that thanks to Christine & Joe Bowes, and Cynthia & Richard Franco, we have a great feast of "yummies and healthies" every month!

I'm looking forward to seeing you all at our next meeting, Friday March 11 at the P.G. Museum!

Susie Harlow,

President, Carmel Valley Gem and Mineral Society

CVGMS BOARD MEETING 2/11/2011

Call to Order: Meeting called to order by Vice-President Margaret Chan.

Present: Margaret Chan, Pearl Chan, Adrienne Pimentel, Jay House, Talma Taormina, Matt and Barb Biewer, Rich Saylor, and Janis Rovetti.

Membership: Jay reports no new members.

Treasurer's Report: Pearl gave the treasurer's report. It was M/S/P to pay the current bills which include a deposit to the Fairgrounds and payment for the Discovery Bus to Newark.

Scholarship Report: There was no scholarship report.

Federation Report: There was no federation report, either.

Old Business: Please join us for the annual bus trip to the Castro Valley Mineral and Gem Show in Newark on February 26, 2011. It's a great trip for all.

New Business: Janis reserved Whispering Pines for Sunday, June 12 for the annual BBQ and white elephant auction. There will be a rock workshop at the Biewers' the weekend of April 9 and 10. Bring your own lunch and enjoy the day! Cynthia and Richard Franco have agreed to be the new Web Masters. Thank you SO much!

March Program: Susie Harlow will be giving a presentation and slide show on the Tucson Show. If any members have something special to share about their trip to Tucson please bring it for "Show and Tell."

The meeting was adjourned. The next meeting is Friday, March 11, 2011.

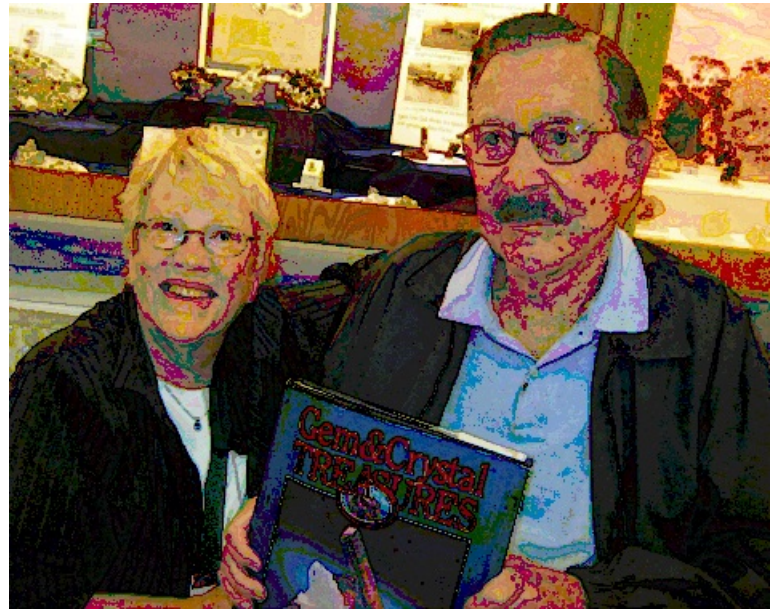
Janis Rovetti, Recording Secretary

TUCSON TRIP REPORT, by Susie Harlow

Tucson....what a great experience. Karin Salomon rode with to help navigate and keep me awake! The temp took



Susie H. & Ed Swoboda



Susie H. with Pete Bancroft

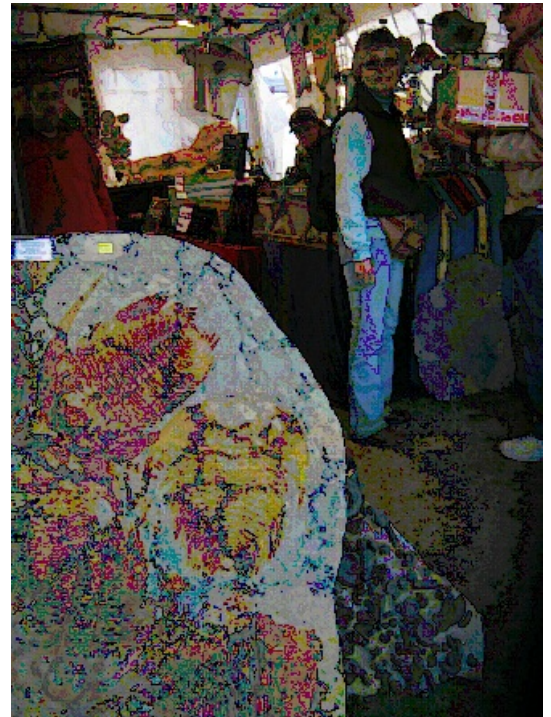
a nosedive the day we arrived and the next morning it was 17 degrees INSIDE the motorhome!! It was dry-camping so no electricity or water....but since the water pipes froze, we couldn't have used it if we had had it! But the experience was still wonderful! AMAZING specimens and so many places to buy them....41

different "venues" which were either parking lots full of vendor tents or hotels/motels in which each room was set up by a vendor. It was overwhelming, with vendors from all over the world! The pinnacle of my experience was meeting and spending time with the two men, Ed Swoboda and Pete Bancroft, who were with my dad at the benitoite mine in 1937. They



Talma & really BIG fish fossil!

are 95 and still going strong!! I'll now just share the experience in a few pictures.....



Talma with urchin fossils...



Jay, Matt & Barb checking out one of the hotel suite setups in Tucson...



Pegmatite minerals from San Diego County were especially prevalent at the "Minerals of California" show in Tucson this year. * * *

UPCOMING TRIP TO 3 TURQUOISE MINES NEAR TONOPAH, NV, MAY 7~9

Tonopah is about 140 miles east of Mono Lake. It is about an 8 hour drive from the Bay Area if Hwy 108 or Hwy 120 is open. 5 members of the Sequoia club (Redwood City) are signed up for all 3 days. All of us have been before and feel it is worth a return trip. There are 3 mines scheduled on 3 days. In all of these we will be searching through extensive tailing piles, not digging out seams from the rock walls. Sat, 5/7 Royston Hills, 25 miles north of Tonopah, one of two working mines owned by the Otteson family. This is where most of the good turquoise will be found. Fee is \$150, \$50 advance deposit, non-refundable. Dean Otteson uses a backhoe and tractor to turn over fresh material before and during the dig. I've been here 6 or 7 times and always felt well rewarded. Sun, 5/8 Easter Blue, 35 miles north of Tonopah, the other mine owned by the Otteson family. An active claim but it hasn't been worked in several years. Fee is \$50. Not as easy to find good material but I found enough last year to be satisfied. Bob Simms, a Sequoia member, found enough to acquire the nickname "Lucky Bob". Mon, 5/9 Turquoise Bonanza, a few miles east of Mina, NV on the slopes of Pilot Mountain. Fee is \$75. This is about 80 miles northwest of Tonopah. The mine is owned and worked by Chris Rose. This is the first time there has been an organized field trip there. I expect to find turquoise but have no details beyond that. If you have a Yahoo email account, you can join the Yahoo Group, AllTurquoise, and sign up on the Group site. If you want more details or want to sign up but don't have Yahoo email, you can reach me as shown below. At present, 16 people are signed up with deposits paid. The max group size is 30, so there should be no problem going if you want to.

Here's the usual routine, hope it answers your questions about the trip: Everyone arranges their own transportation. Arrive in Tonopah on Friday. Those who make it before 6PM meet at the Ramada Inn coffee shop for supper and socializing. Always a mix of newcomers and old hands. Ramada and Best Western are the high end lodgings in Tonopah, with rates in the \$75 - 95 range, depending on time of year. I usually stay at the Clown Motel, \$36 single, \$39 for 2 people/2 queen beds. It has wireless, TV, microwave, and refrigerator, and is clean. Definitely no luxury though. There are a couple more like it in town. There is a Mexican restaurant and the Ramada coffee shop in town. One well-stocked grocery store/pharmacy. Several gas stations with convenience stores attached. The starting point for Saturday and Sunday is the parking lot of Otteson's Turquoise store in Tonopah. We meet there on Saturday at 8:30 AM, pay the balance of our fees for Saturday and Sunday, then caravan out to Royston. The last 7 miles are a dirt road, usually in good enough shape that a passenger car could make it; SUVs and pickups have no problem, even with 2WD. The 6 hour collecting clock starts upon arrival. Bring your own water, lunch, and toilet tissue - the nearest amenities are 25 miles away. You can leave early; those remaining carpool back. Everyone will be tired and dirty. Those who have enough energy left meet at the Mexican restaurant for supper and show'n tell. On Sunday, those going to Easter Blue also meet at Otteson's but the store won't be open. Someone who has been before leads the group out to Easter Blue. We go several miles past the turnoff to Royston, then take a twisty, rutted, and sometimes steep dirt road to Easter Blue, 2 miles from the main road. 4WD recommended. Carpooling suggested if someone doesn't have the right vehicle for this road. The Gem Field claim south of Tonopah is a good alternative for bulls eye agate/rhyolite and opalite for those who want to mix up their collecting. \$1/lb, honor system. People who need to be back to work on Monday leave on Sunday afternoon and get home in the late evening. For those staying, the Monday site is considerably closer to Hawthorne, NV than to Tonopah. I'm planning to check out of the Clown Sunday morning, then drive after the dig to Hawthorne. There are several low cost motels along Hwy 95 going through Hawthorne. In the morning we'll retrace from Hawthorne to Mina, then out to the Turquoise Bonanza. I think the signup for Monday is currently at 7 people. Good weather for early May would be H 70, L 45, clear skies. It could also be H 45, L 28, with bitter cold wind and rain. I don't expect that but the storm pattern this year is crazier than usual. Tonopah is about 6000 ft altitude. If someone is seriously interested, I recommend joining the Yahoo AllTurquoise Group. There will be considerable discussion of the trip beforehand. You can drop out later if you don't have a permanent interest in turquoise.

Best regards,
Duncan Penman, Sequoia Gem & Mineral Soc.
dwpmail2@yahoo.com (408) 203-6056

Jim & Nancy's Tucson Adventure

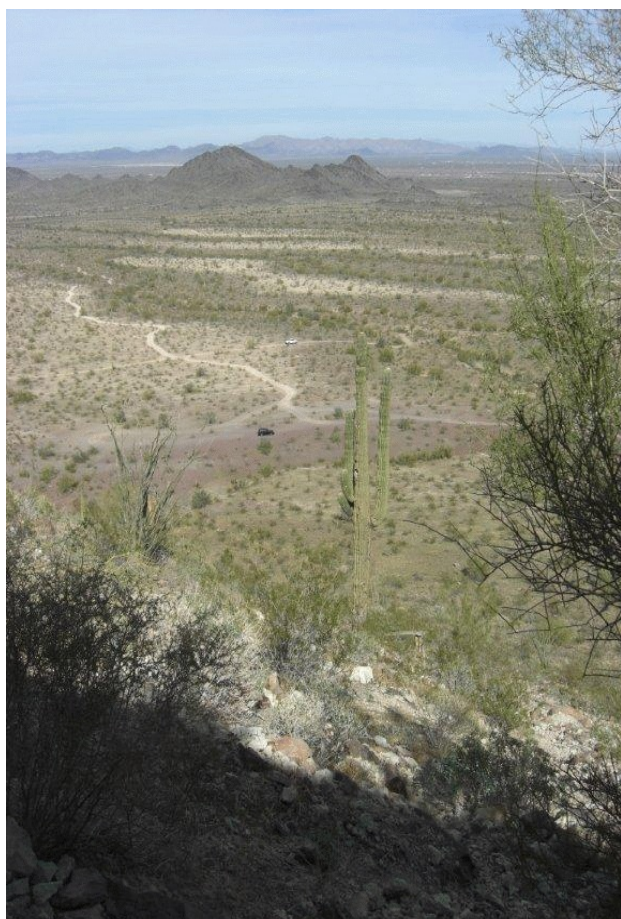
by Jim Brace-Thompson

Nancy and I returned home to Ventura last night from the Tucson Gem & Mineral Show. Nine hours one-way is a long drive, but it was worth it! The theme of this year's show was "Minerals of California," and it was clear from the special exhibits that California rocks! For the past year, I've been photographing California rocks and minerals, and in Tucson I added about 250 photos to the collection. Eventually, I hope to edit it down and pull it together into a "California Minerals" presentation for one of our club meetings. Tourmaline and gold clearly dominated the displays in Tucson, but there was a wide variety of other California treats, such as benitoite, Searles Lake minerals, bright orange garnets, and more.

Even diamonds! The one downside of the Tucson show was pricing. I don't know who has the pocketbook for \$10,000 specimens,



The view from Saddle Mountain- 75 miles east of Quartzsite- where Nancy and Jim B-T collected chalcedony roses and fire agates on the way home from the annual show of the Tucson Gem and Mineral Society.



Another view from saddle Mountain, or you can collect chalcedony desert roses, little vugs of quartz crystals, and fire agate. Watch out though, when climbing down- *don't slip into that cactus!*

but they sure had a lot of them on display in dealer booths.

I overheard one conversation where a customer said, "Wow, you must have a million dollars in inventory here," to which the dealer replied, Try twenty million."



In addition to gold, Folks went gaga over the tourmaline specimens at this year's Tucson show with its theme of "Minerals of California".

I've often heard that worldwide gem and mineral prices for year are set at the Tucson show. I don't know if that's true, but dealers were certainly testing what the market would bear. Nancy and I went to Tucson three years ago, and I don't recall it being so pricey—and that was before the Great Recession!

If traveling to Tucson, go early, and go to the surrounding shows for the deals, then go to the club show at the convention center for the eye candy. Prices were so bad, we restricted ourselves pretty much to thumbnail specimens, and even some of the thumbnails (i.e., specimens small enough to fit within a one-inch cube) were going for hundreds of dollars. We did manage to secure a few additions to our collection, and Nancy got a new opal to dangle around her neck. Also, I never thought it would happen, but with 250 dealers all crowded into one convention center, at a certain point, I turned to Nancy and said, "It's just rocks." It really does become overload. Still, for a true rockhound, it's a pleasant sort of overload...



Still more tourmaline illustrates why it was a true star attraction for the "Minerals of California" theme at this year's Tucson show.



Peterson Peak quartz was among the "Minerals of California" at this year's Tucson show.

We stayed at a fantastic bed-and-breakfast, The Royal Elizabeth, just a block and a half walk from the convention center, and we met up with Susie Harlow several times (we would use her terrific benitoite display as a meeting point). Susie got the



Gold was a popular item among the "Minerals of California" displays during this year's Tucson Show.



Folks were hanging from the rafters for this year's Tucson show!



Of course one of the star attractions for the "Minerals of California" theme at the Tucson Show was the state gemstone, benitoite, both in natural and faceted forms.

opportunity to meet with Pete Bancroft and Ed Swoboda.

Now in their 90s, both are legends in the California gem and mineral collecting community, and both accompanied Susie's father on his collecting trip for benitoite back in 1937. Susie and I are hoping to use their recollections, along with stories she remembers from her father, to co-author an article for *Rock & Gem* magazine on that trip.



Pegmatite minerals from San Diego County were especially prevalent at the "Minerals of California" show in Tucson this year.

After all the high prices in the convention center, on the way home Nancy and I opted for a bucketful of free specimens with a quick field trip off Route 10 in Arizona to collect chalcedony roses and small pieces of agate at Saddle Mountain, about 75 miles east of Quartzsite. Most are small bits that will go into the tumbler, but some supposedly are fire agates. We'll let you know once we get 'em cleaned up! By the way, don't listen to the guidebooks. They tell you to climb all the way to the top of the mountain and do some hard-rock mining. I tried a little of that. But we ended up finding most of our material down below, on the flat plain leading up to the mountain. Turned out, I didn't need to slip and slide down the mountain and into that cactus *after all*....

-Jim



SUNSHINE REPORT

I recently got a report on Life Member Pat Antonio's current condition; she's currently in a nursing home in La Jolla, recovering from a heart attack in September of last year. According to Franklin Antonio, even though her memory's fading, she still plays a mean game of scrabble! The club will be passing around a card for her at the next meeting; please be sure to sign it, if you will!

-Rich

CAVEAT EMPTOR..... *FORWARDED BY Karen S.; copied from the LARocks yahoo group*

BEAD BUYER BEWARE: *posted by:* kenrogers4u@juno.com

"Lately, I have visited a number of "Gem Shows" in the LA area (Gem Faire, International Gem & Jewelry Show, The Los Angeles Gift Show, The Pasadena Bead & Design Show), plus a number of Rock Club shows. All of these shows have a plethora of "Gemstone" bead dealers. I was astonished when I realized that over 50% of the Gemstone beads for sale were either created from Man Made materials, recomposed natural materials, or Dyed stone.

Many of these gemstone beads (& cabs) were blatant fakes - dyed agates, chalcedonies, shell, jasper, etc. - dyed in "Pop designer colors". But, there were many other dyed stone beads (& cabs) that were meant to fool us. Many of the other gem beads were finely engineered Fakes, using such materials as Man made HYDRO QUARTZ CRYSTAL (check: <http://www.faceters.com/askjeff/answer30.shtml>) and you'll be shocked about your cut stones, & some rough, too), plus glass, plastics, and cemented conglomerates.

Below are a few specific examples of Beads, Cabs, & Pendants: I have checked out:

- * Turquoise ribbons in a mottled tan "rhyolite" matrix (like material from the Royston Mine) being sold as "Royston" or "Sleeping Beauty" Turquoise. This material is being created in China and can be spotted two ways. - 1) the dividing line between the "turquoise" & the matrix is indistinct; 2) Under 10 power magnification you can see the "rhyolite" matrix is made up of cemented particles.
- * Varacite that is actually dyed Impression Jasper.
- * Fake "Rainbow Calcilica" (which is already said to be a fake). This material, created in China is very smooth & homogenized, and doesn't have the texture of the original. Dealers are, also, selling it as "Fordite".
- * Fake Moldavite. Cast green glass with the Moldavite "fingerprint" texture on it's surface.. It's "fingerprint" textured surface looks too clean and smooth.
- * "Cripple Creek Turquoise" with gold veins running through it. This material is created in China from a



Yes, California even boasts corundum-to get a sapphire crystal like this, head for Riverside County!

turquoise powder (maybe plastic) and bronze wires.

- * Lapis with Pyrite chunks AND Malachite with Pyrite chunks. These are both created in China from ground Lapis & ground Pyrite (or Malachite & Pyrite) and bound together with resin.

- * Lapis and other opaque "crystals" that are cut to look like Quartz Crystals (for the metaphysical crowd).

- * Howlite & Magnesite dyed to resemble Turquoise, Lapis, Rhodonite, etc.

- * Fossil dinosaur teeth made of painted plaster.

- * Stabilized and colorshot Chalk Turquoise in different colors.

I would have to say that many of these dealers (generally Asian) didn't know they were selling fakes (& probably couldn't care less). They just pass on what their suppliers tell them. But, I do know of a couple of dealers who pass themselves off as "experts" and are knowingly misleading customers and selling fakes. I picked up a wonderful, compact, inexpensive, lighted magnifier from Wendell, at Ameritool, that I now carry with me, everywhere. It has two lenses - 17X & 50X. It has two LED lamps - daylight and UV. With this simple lighted magnifier I have spotted a number of fakes, that had fooled me. It's paid for itself, many times over..."

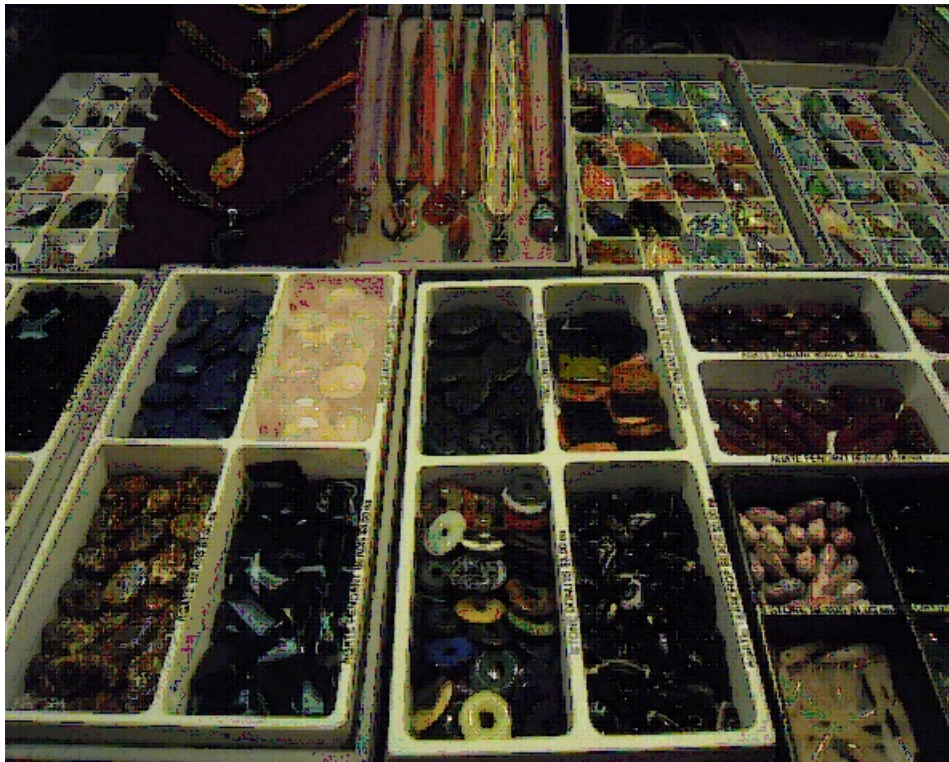
Ken

THE BUS TRIP TO HAYWARD by Rich Saylor

The annual Saturday March bus trip to the "Hayward show", now taking place in fairly nearby Newark, was all in all a good one, though as last year most of us preferred the older venue which all took place under one roof. Below are some snapshots I took just to give a hint of the style of the thing; the best way to see it is, of course, to go yourself! Speaking of which, the bus- as it turned out- was half empty; it turned out that a number of members elected- for various reasons-

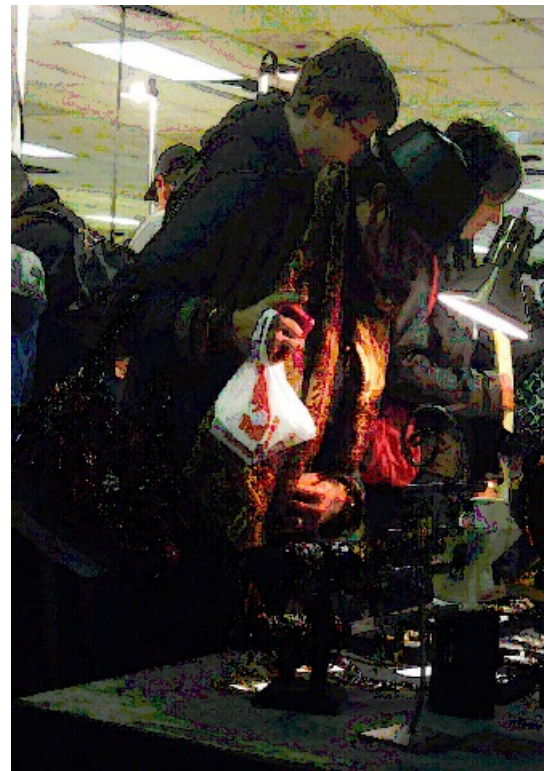


A few less of the usual suspects...



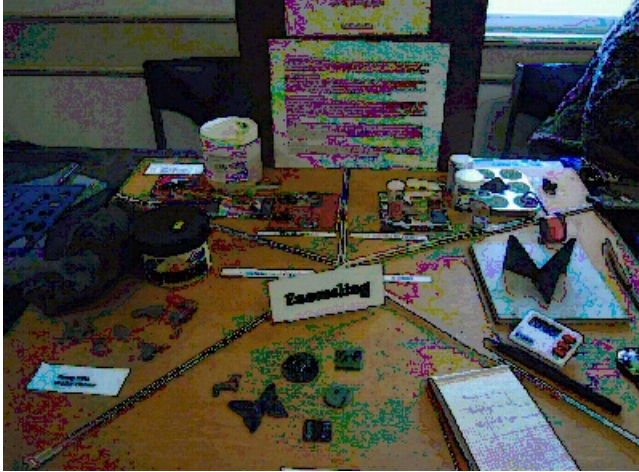
Beads. Stuff.

to drive themselves up to the event. Well, their loss, as some of the cookies, etc. being passed around on the bus were darn good! My thanks to those who were so willing to not only do the cookin', but to share as well! Well anyway, of course our "local" shows can't compare with either Quartzsite or



Lots of lookin' around...

Tucson, but they're somewhat closer, after all. The dealer mix was pretty good, something for everyone (unlike the usual "beads, beads & more....beads" type of show!) I wound up with some stuff for (guess what?) *more bolas*, and everyone seems to have found at least *something* they apparently couldn't live without.... along one side of the building was a room full of demonstrators, wire wrap, enameling, stone carving, beading, you name it! Also a HUGE selection of all kinds of books...rock books, bird books, and who knows what else! At near giveaway prices Martha managed to add to our *already* overstuffed reference library....way to go, Martha!

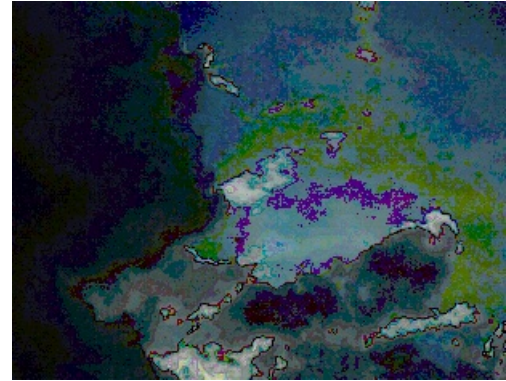


Everything you need for enameling, I guess...

Anyway we took off for home at the crack of 3pm (Martha being the last to arrive, at about 3PM!) and headed South...



Pretty nice work!



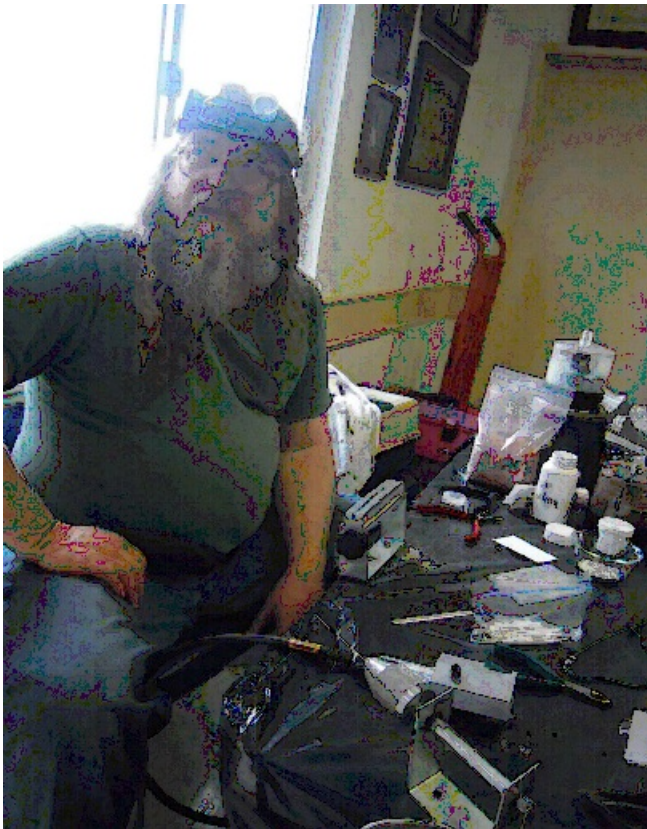
Clouds. DARK clouds.

check out the photo I took on the homeward leg of the really DARK

clouds that seemed to be following us...well a bit more than that, as much of the trip home was spent peering thru the bus's windscreen at the often huge snowflakes that blessed us much of the way home! None of them really stuck though and by the time we reached the Peninsula all had disappeared, along with the darkest of the clouds. Anyway, a nice trip! *Thanks to everyone who did all the arranging!*

-Rich

* * *



Making "chain mail" style silver jewelry



Let it snow, let it snow, *let it snow...*

UPCOMING EVENTS

Only club and Federation shows in California, & nearby shows in Oregon, Nevada & Arizona are listed, due to space limitations. For more information & other out-of-state listings please go to: rockngem.com/showdates or cfmsinc.org

COMMERCIAL SHOWS will no longer be listed; those wishing to obtain information on non-club or non-Federation shows are advised to check out the following promoters & websites for the latest info & show dates:

ALL "Crystal Fair" events: contact Jerry Tomlinson, P.O. Box 1371, Sausalito, CA 94966, (415) 383-7837 (415) 383-7837 ; e-mail: jerry@crystalfair.com; Web site: www.crystalfair.com

ALL "Gem Fair" events: contact Yooy Nelson, (503) 252-8300 (503) 252-8300 ; e-mail: info@gemfaire.com; Web site: www.gemfaire.com

ALL "Rings & Things BeadTours": contact Dave Robertson, (800) 366-2156; e-mail: d Robertson@rings-things.com; Web site: www.rings-things.com

Please confirm all show dates- Ed.

Bakersfield, California's 10th Annual Rock and Gem Show: "RENDEZVOUS 2011"

Kern County Shrine's, 700 South P. Street, Bakersfield, Ca, Saturday & Sunday, March 19th & 20th, Saturday 9:00 A.M. to 5:00 PM, Sunday 9:00 AM to 5:00 PM FREE PARKING ,FREE ADMISSION, FREE HOURLY DRAWINGS! Demonstrations through out the show on sphere making, cabochon, making, silversmithing ,wire wrapping ,and much more. Grab Bags , Wheel Of Fortune, End of Show Raffle for great Prizes. Tickets\$1.00 each. Silent Auction, with many great pieces of material, and The General Store with many unusual gifts!

Dealers from all over the U.S. & abroad selling many unique and unusual gifts from Mother Earth. ROCKS FOSSILS, GEMS, JEWELRY, ROUGH ROCK, DIACHRONIC GLASS, LAPIDARY EQUIPMENT, NEW AND USED BEADS & BEADING SUPPLIES. Dry Camp Available for club and visitors Indoor bathroom. COME JOIN US FOR A FUN FILLED WEEKEND THE WHOLE FAMILY WILL ENJOY. BEST OF ALL "IT'S FREE". For information about the Rendezvous or our becoming a vendor, please call Lynne G.. Helfrich (661)323-2663 CELL (661)378-4450 or e-mail me at lewsrocks@bak.rr.com DEALERS AND VENDORS WANTED! We have a variety of out door spaces available to meet your needs from 12' x 12' to 50' x 50' and larger. There are dry camp facilities available for clubs or visitors or if you prefer a motel we have special rates for our show at the Howard Johnson's.

CAMP ZZYZX, 2011:

Note: this notice was previously sent to all CVGMS members for whom I have an email address; but here it is again:

Notice to all CVGMS members: If you'd like to go to "Camp ZZYZX" - pronounced "zye-zex" - this coming March 27~April 3, 2011, the time is running short, as only a very few spots out of 65 are still open! The cost is \$350 per person, accommodations are spartan (bring your own sleeping bag, etc.). But of course all meals are provided...classes for the week include silver fabrication, beading, softstone carving & scrimshaw, advanced wire art, wire art, enameling, dichroic glass & precious metal clay, and field trips. Certain class materials may be extra, so bring what you can. Call Marion Roberts for info; 209-538-0197, for reservations call Audrey Harvey; 805-492-2253; applications (with full payment, made to CFMS) mailed to Audrey Harvey, 3363 Tuxford Place, Thousand Oaks, CA 91360. FYI Zzyzx is some 50 miles of Barstow, CA; a list of stuff to bring can be given upon request. No pets. No cancellations after March 10, unless you provide a replacement person or persons. The deadline for applications is February 27, but even at the last possible minute, it might not hurt to try... You will be given a choice of 3 classes to enroll in, there being a first, second & third choice. Some classes may fill up early! However I understand that it's OK to hop around a bit. PS: Martha & I plan on going, this year- Rich

Mother Lode Mineral Society's ROCK & GEM SHOW MARCH 12 & 13TH

**Saturday 10 am-6 pm & Sunday 10 am-5 pm
Admission \$5.00 - 12 & under free**

- **40+ Dealers, 100 Exhibits**
- **35 Demonstrators!**
- **Large Children's Area**
- **Free Parking**
- **Fluorescent Tent**
- **Great Food**



Speakers: (Check website for dates, times and additional info)

Bob Jones will talk about California Minerals.

Mike Kokinos will be talking about the benefits of 501(c)(3) non-profit status.

Larry Martin will be discussing Mammoth and other fossils found in the Madera Land Fill.

Gregg Wilkerson from BLM will speak on Land Claims.

Richard Wade will present fossils and dinosaurs for children of all ages.

Turlock Fairgrounds 900 North Broadway Turlock CA

www.turlockgemshow.com

Chairman: Bud & Terry McMillin 209-524-3494

MARCH 2011:

4-13 IMPERIAL, CA: Annual show, "California Mid-Winter Fair and Fiesta"; Imperial Valley Gem & Mineral Society; IV Expo, 200 E. 2nd; Fri. 12-10, Sat. 12-10, Sun. 12-10, Mon. 4-10, Tue. 4-10, Wed. 4-10, Thu. 4-10, Fri. 4-10, Sat. 12-10, Sun. 12-10; contact John Pyle Jr., P.O. Box 1721, El Centro, CA 92244, (760) 562-3453; e-mail: Jp.Ivgms@att.net; Web site: <http://ivgms.tumblr.com>

5-6 ARCADIA, CA: Show; Monrovia Rockhounds Inc.; LA County Arboretum, Ayres Hall, 301 N. Baldwin Ave., 1 block south of 210 Fwy.; Sat. 9-4:30, Sun. 9-4:30; adults \$8, seniors and students \$6, children \$3; more than 10 dealers, minerals, gems, jewelry, beads, findings, fossils, club geode cracking, Grab Bags, Treasure Wheel, Dino Dig, Fossil Find, prize drawings, grand prize raffle; contact Jo Anna Ritchey, 224 Oaks Ave., Monrovia, CA 91016, (626) 359-1624; e-mail: joannaritchey@gmail.com; Web site: www.moroks.com

5-6 VENTURA, CA: 49th annual show; Ventura Gem & Mineral Society; Ventura County Fairgrounds, 10 W. Harbor Blvd.; Sat. 10-5, Sun. 10-4; club member displays, gems, minerals, fossils, lapidary art, demonstrations, lapidary arts, jewelry making, door prizes, silent auctions, "Country Store", dealers, children's activities; free admission; contact Andy Anderson, (805) 987-0043; e-mail: lilliananderson@juno.com; Web site: www.vgms.org

11-13 HILLSBORO, OR: 53rd annual show; Tualatin Valley Gem Club; Washington County Fairgrounds, 873 NE 34th Ave., on Cornell Road, across from Hillsboro Airport; Fri. 10-6, Sat. 10-6, Sun. 10-5; contact Roy Woo, P.O. Box 641, Forest Grove, OR 97116; e-mail: rwool2648@gmail.com

11-13 VICTORVILLE, CA: 35th annual tailgate; Victor Valley Gem & Mineral Club; Stoddard Wells Rd., 12 miles east of I-15; Fri. 9-5, Sat. 9-5, Sun. 9-5; rough materials, gems, jewelry, findings, equipment, Sat. field trip, silent auctions; contact VVGMC, (760) 243-2330, or Brett Ward, (760) 954-4323; Web site: www.vvgmc.org

12-13 KLAMATH FALLS, OR: Annual show; Rock and Arrowhead Club; Klamath County Fairgrounds, 3531 S. 6th St.; Sat. 9-5, Sun. 10-4; Petrified Wood; contact Jennifer Zimmerlee, (541) 545-6773; email: jlazys@hotmail.com; or Marv Stump, (541) 882-8341

11-13 VICTORVILLE, CA: 35th annual tailgate; Victor Valley Gem & Mineral Club; Stoddard Wells Rd., 12 miles east of I-15; Fri. 9-5, Sat. 9-5, Sun. 9-5; rough materials, gems, jewelry, findings, equipment, Sat. field trip, silent auctions; contact VVGMC, (760) 243-2330, or Brett Ward, (760) 954-4323; Web site: www.vvgmc.org

12-13 SAN MARINO, CA: Show, "Tournament of Gems, Rocks to Art"; Pasadena Lapidary Society; San Marino Masonic Center, 3130 Huntington Dr.; Sat. 10-6, Sun. 10-5; free admission; demonstrations, display cases, dealers; contact Marcia Goetz, 755 W. Dike St., Glendora, CA 91740, (626) 260-7239; e-mail: joenmarl@verizon.net

12-13 SPRECKELS, CA: Show, "Parade of Gems"; Salinas Valley Rock & Gem Club; Spreckels Veteran's Hall, 5th St. and Llano St.; Sat. 10-5, Sun. 10-5; free admission; demonstrators, cab making, bead enameling, youth beading and rock painting, fluorescent display, rock bags with prizes, "wheel of fortune", raffles, free drawings, auction, dealers, jewelry, beads, fossils, craft supplies, minerals, crystals; contact Karen Jones, P.O. Box 668, Soledad, CA 93960, (831) 678-0337; email: kenkaren0337@att.net

12-13 TURLOCK, CA: 45th annual show; Mother Lode Mineral Society; Turlock Fairgrounds, 900 N. Broadway; Sat. 10-6, Sun. 10-5; adults \$5, children 12 and under free with adult; minerals, rocks, beads, jewelry, fossils, dinosaurs, fluorescents, tools, books, educational material, large children's area, 40 vendors, 80 exhibits, 20 demonstrations, jewelry making, lapidary arts, gold panning, rock sale, fluorescent tent, speakers (Bob Jones, Dr. Gregg Wilkerson), fossil display, life-size T-rex skull; contact Bud & Terry McMillin, (209) 524-3494; e-mail: terry.mcmillin@yahoo.com; Web site: www.turlockgemshow.com

17-20 SAN BERNARDINO, CA: Show and sale; OrangeBelt Mineralogical Society; Little League Baseball Western Region Headquarters, 6707 Little League Dr.; Thu. 12-5, Fri. 9-6, Sat. 9-6, Sun. 9-3; free admission; rocks, minerals, jewelry, gems, tools, rock auction; contact Ann Mansfield, (909) 297-6652; e-mail: amansfield@live.com; Web site: OBMSRocks.webs.com

19-20 BAKERSFIELD, CA: 10th annual show, "Rendezvous"; Lewis M. Helfrich; Kern County Shriners, 1142 S. P St.; Sat. 9-5, Sun. 9-5; free admission; free drawings, demonstrations, sphere making, cabochon making, silversmithing, wire wrapping, grab bags, Wheel of Fortune, raffle, silent auction, General Store, dealers, rocks, fossils, gems, jewelry, rough rock, diachronic glass, lapidary equipment, beads and beading supplies; contact Lewis M. Helfrich, (661) 323-2663 or (661) 378-4450; e-mail: lewsrocks@bak.rr.com

19-20 ESCONDIDO, CA: Show and sale; Palomar Gem & Mineral Club; Orfila Vineyards, 13455 San Pasqual Rd.; Sat. 10-5, Sun. 10-4; free admission; dealers, gems, jewelry, minerals, demos; contact Michael Nelson, 1341 Rincon Villa Dr., Escondido, CA 92027, (760) 580-5902; e-mail: manelson1@cox.net; Web site: palomargem.org/index.html

19-20 VALLEJO, CA: Show, "Spring Bling"; Vallejo Gem & Mineral Society; Solano County Fairgrounds, 900 Fairgrounds Dr., County Bldg.; Sat. 10-5, Sun. 10-5; adults \$5, children under 14 free with adult; gems, jewelry, minerals, fossils, beads, findings, hourly door prizes, silent auction, "wheel of fortune", grab bags; contact Dan Wolke,

26-27 ANGELS CAMP, CA: Show, "Jump for the Gold"; Calaveras Gem & Mineral Society; Calaveras County Fairground, 101 Frogtown Rd.; Sat. 10-5, Sun. 10-4; adults \$4, children 12 and under free with paying adult; exhibits, demonstrations, kids' activities, silent auction, sales, raffle, door prizes, dealers, fossils, jewelry, meteorites, books, lapidary supplies, slabs, gems, beads; contact Tak Iwata, 18310 Coyote Meadow Rd., Sonoma, CA 95370, (209) 928-5579; e-mail: Tak2me@msn.com; Web site: www.calaverasgemandmineral.org

26-27 ROSEVILLE, CA: 49th annual show; Roseville Rock Rollers; Roseville (Placer County) Fairgrounds, 800 All America City Blvd.; Sat. 10-5, Sun. 10-4; adults \$6, seniors (60+) \$5, kids 12 and under free; more than 35 vendors, crystals, gold, geode cracking, beads, gemstones, fossils, polished stones, handcrafted jewelry, opal, world-class mineral specimens, tourmaline, sunstones, amber, mineral identification, "Kids' Junction", demonstrations, silent auctions, more than 40 exhibits, raffle, lapidary shop open house; contact Gloria Marie, (916) 216-1114; e-mail: gloriarosevillerockrollers@gmail.com; Web site: www.rockrollers.com

26-27 TORRANCE, CA: 62nd annual show and sale; South Bay Lapidary & Mineral Society; Ken Miller Recreation Center, 3341 Torrance Blvd., entrance on Madrona Ave.; Sat. 10-5, Sun. 10-4; free admission; door prizes, special guest exhibitors and demonstrators from the American Opal Society, fluorescent mineral show, Petrified Forest display, polished stones, slabs, Artisans Store featuring handmade jewelry, rough rocks; contact Craig & Kathy Polliard, (310) 533-4931; e-mail: craigpolliard@yahoo.com; Web site: www.palosverdes.com/sblap

APRIL 2011:

2-3 LANCASTER, CA: Annual show; Antelope Valley Gem & Mineral Club; Lancaster High School, 44701 32nd St. W.; Sat. 9-5, Sun. 9-5; free admission; dealers, auction table, demonstrations, displays, games, raffle, grand prize drawing; contact Susan (Chaisson) Walblom, 42122 52nd St., West Quartz Hill, CA 93534, (661) 943-1861; e-mail: av_gem@yahoo.com; Web site: www.avgem.weebly.com

2-3 LEMOORE, CA: Show; Lemoore Gem & Mineral Club; Lemoore Trinity Hall, 470 Champion St.; Sat. 10-6, Sun. 10-6; free admission; contact Judy Pereira, (559) 924-4052

8-10 VISTA, CA: Annual show; San Diego County Council; Antique Gas and Steam Engine Museum, 2040 N. Santa Fe Ave.; free admission; Fri. 9-5, Sat. 9-5, Sun. 9-4; more than 40 dealers, gems, minerals, slabs, jewelry, raffle; contact Ray Pearce, (760) 726-7570

9-10 KINGMAN, AZ: Show and sale; Mohave County Gemstoners; Kingman Academy of Learning, 3420 N Burbank; Sat. 9-5, Sun. 9-4; free admission; rough rock, slabs, cabs, jewelry, wire wrapping, silver and gold smithing, lapidary and jewelry fabrication equipment and supplies, demonstrations, raffles, prizes, children's activities, educational information, displays, crafts, fossils, minerals, silent auction, door prizes, cash raffle prizes; contact Mary Gann, PO Box 3992, Kingman, AZ 86402; e-mail: quadpol@aol.com; Web site: www.gemstoners.org

9-10 MARIPOSA, CA: 11th annual show, Mountains of Minerals; California State Mining & Mineral Museum; Mariposa County Fairgrounds, Hwy. 49, 2 mi. south of Mariposa; Sat. 10-6, Sun. 10-4; free admission; vendors, mineral specimens, jewelry, lapidary, mineral exhibits, demonstrations, children's activities, speakers, raffles, silent auctions; contact Randy J. Bolt, (209) 742-7625; e-mail: rockmuseum@sti.net

9-10 PARADISE, CA: Show and sale, Paradise of Gems; Paradise Gem & Mineral Club; Elk Lodge 6309 Clark Rd.; Sat. 10-5, Sun. 10-4; adults \$2, seniors \$1, under 16 free; contact Manuel Garcia, 5659 Foster Rd., Paradise, CA 95969, (530) 877-7324; e-mail: mmpg@earthlink.net; Web site: www.Paradisegem.org

15-17 SAN JOSE, CA: 56th annual show, The Art of Stone. Santa Clara Valley Gem & Mineral Society; Santa Clara County Fairgrounds, 344 Tully Rd.; Fri. 9-5, Sat. 10-5, Sun. 10-5; adults \$6, children under 12 free, coupon on Web site; 50 dealers, kids' area, demonstrations, speakers, fluorescent display, gold panning, displays; contact Marc Mullaney, (408) 265-1422; e-mail: info@scvgms.org; Web site: www.scvgms.org

16-17 NEWBURY PARK, CA: Show; 37th annual show, Pageant of a Thousand Gems; Conejo Gem & Mineral Club; Borchard Park Community Center, 190 Reino Rd., corner of Reino Rd. and Borchard Rd.; Sat. 10-5, Sun. 10-5; free admission; club member exhibits and sales, gems, jewelry, rocks, minerals, fossils, youth activities, lapidary and jewelry-making demonstrations; silent auction, door prizes; contact Richard or Mary Pat Weber, 4290 Misty Meadow St., Moorpark, CA 93021, (805) 529-2524; e-mail: rewnews@sbcglobal.net; Web site: www.cwgmc.org

22-24 GRANTS PASS, OR: Show; Rogue Gem & Geology Club; Josephine County Fairgrounds, 1451 Fairgrounds Rd.; Fri. 9-5, Sat. 9-5, Sun. 9-4; adults \$1, children free; dealers, silent auction, door prizes, displays, demonstrations, kids' games; contact Mary Blankeship, P.O. Box 1224, Grants Pass, OR 97528, (541) 862-2989; e-mail: rockhoundclub@yahoo.com; Web site: www.roguegemandgeology.com

APRIL-MAY 2011:

30-1 ANAHEIM, CA: Show; Searchers Gem & Mineral Society; Brookhurst Community Center, 2271 W. Crescent

Ave.; Sat. 10-5, Sun. 10-4:30; free admission; special exhibit, gold panning, jewelry making for kids, silent auction, gemstones, hobby supplies, books, demonstrations, displays, door prizes; contact Beth Pelfrey, (714) 774-2754; e-mail: martin.swiderski@jacobs.com; Web site: www.searchersrocks.org

30-1 MEDFORD, OR: 56th annual show, Diamonds Are Forever; Roxy Ann Gem & Mineral Society; Medford Armory, 1701 S. Pacific Hwy.; Sat. 9-5:30, Sun. 10-4:30; exhibits, dealers, demonstrations, gold panning, silent auction, children's activities, door prizes; contact Janet Fields, 378 Dexter Way, Grants Pass, OR 97527, (541) 476-8937, or Sandy Roney, 1431 Elaine Way, Medford, OR 97501, (541) 734-0838; e-mail: msroney@prodial.us

MAY 2011:

6-8 BISHOP, CA: 10th annual show, Eastern Sierra Gem & Mineral Show; Lone Pine Gem & Mineral Society; Tri-County Fairgrounds, Robinson Bldg., Sierra St. and Fair Dr.; Fri. 6-9, Sat. 9:30-5, Sun. 10-3; free admission; field trips, lapidary demonstrations, lampwork beads, flint knapping, sphere making, displays, world's largest fulgurite, local minerals and fossils, spinning wheel, geodes, vendors, door prizes, children's activities; contact Francee Graham, P.O. Box 667, Lone Pine, CA 93545, (760) 876-4319; e-mail: franceem@qnet.com

13-15 ANDERSON, CA: Show, Northern California Treasures CFMS Show & Convention; Superior California Gem & Mineral Society; Shasta District Fairgrounds, 1890 Briggs St.; Fri. 9-5, Sat. 9-5, Sun. 10-4; adults \$4, seniors \$3, students \$2, children under 12 free; displays, world-class speakers, auction, demonstrations, raffle, dealers, minerals, fossils, jewelry, gems, beads, supplies, gifts; contact Steve Puderbaugh, 19652 N. Hirsch Court, Anderson, CA 96007, (530) 604-2951; e-mail: steve@applyaline.com; Web site: <http://superiorcal.com>

14-15 FOUNTAIN HILLS, AZ: Retail show; Rick Obermiller; Fountain Hills Community Center, 13001 N. La Montana Dr.; Sat. 10-5, Sun. 10-4; adults \$2, children under 12 free; indoor show, mostly Arizona dealers, gems, minerals, jewelry, fossils, kids' activities, drawings, raffles; contact Rick Obermiller, 1332 N. Jesse St., Chandler, AZ 85225-1598, (602) 826-2218; e-mail: obrocks@gmail.com

21-22 JACKSON, CA: 11th annual Tailgate Gemboree; Fossils For Fun Society; Kennedy Gold Mine, 12954 Kennedy Mine Rd.; Sat. 9-5, Sun. 9-5; free admission; indoor exhibits, outdoor dealers, rocks, gems, minerals, fossils, Sat. auctions, surface mine tours, gold panning; contact Debbie Bunn, P.O. Box 255702, Sacramento, CA 95642, (916) 929-6665; e-mail: fossilsforfun@hotmail.com; Web site: www.fossilsforfun.org

JUNE 2011:

3-5 PUYALLUP, WA: Annual show; Puyallup Valley Gem & Mineral Club; Fruitland Grange, 11102 86th Ave. E; Fri. 12-5, Sat. 10-5, Sun. 11-4; contact Nancy LeMay, (253) 952-6212; e-mail: bees2knees@att.net; Web site: www.puyallupgemclub.org

3-5 WOODLAND HILLS, CA: Show; Rockatomics Gem & Mineral Society; Pierce College Farm, 20800 Victory Blvd.; Fri. 9-5, Sat. 9-5, Sun. 9-5; contact Gary Levitt, (818) 993-3802, (818) 321-6290; e-mail: Show@rockatomics.org; Web site: www.Rockatomics.org

4-5 GLENDORA, CA: Show; Glendora GEMS; Goddard Middle School, 859 E. Sierra Madre; Sat. 10-5, Sun. 10-4; contact Bonnie Bidwell, (626) 963-4638; e-mail: Ybidwell2@aol.com

4-5 LA HABRA, CA: Show, Jubilee of Gems; North Orange County Gem & Mineral Society, City of La Habra; La Habra Community Center, 101 W. La Habra Blvd.; Sat. 10-5, Sun. 10-5; free admission; dealers, demonstrators, exhibits, youth activities, geode cutting, raffle prizes, lapidary equipment and supplies, handcrafted jewelry; contact Dave Swanston, (626) 912-1531; Web site: www.nocgms.com

18-19 CAYUCOS, CA: 51st annual show; San Luis Obispo Gem & Mineral Club; Cayucos Vets Hall, 10 Cayucos Dr.; Sat. 9-5, Sun. 9-5; free admission; dealers, rock, gems, minerals, jewelry, gemstones, beads, cabochons, crystals, fossils, jade, rock slabs and rough, custom wire wrapping, lapidary and jewelry-making equipment, prize drawing; contact Mike Lyons, (805) 610-0757; e-mail: jadestar@charter.net; Web site: www.slogem.org

18-19 NEWPORT, OR: 48th annual show, Rockn the Coast; Oregon Coast Agate Club; Yaquina View Elementary School multipurpose room, 351 SE Harney St., just off Hwy. 20, turn south at the light; Sat. 10-6, Sun. 10-4:30; dealers, demonstrators, displays, door prizes; contact K. Myers, PO Box 293, Newport, OR 97365

AND FROM THE EDITOR...

This month's edition of The Prospector is the first "full-bore" try at making a better, *expanded* Prospector...by publishing online. Not including the cover pages, there are 14 pages in all (including this one), which is simply due to the fact that from now on, online editions have no real limit, other than the amount of material contributed by members and others to publish. However, it also means that for those members that do not currently have an email address (27 separate addresses in all!) either a much reduced *printed* version must be composed separately, in order to save postage costs, or else the *expanded* edition must be mailed out complete, at *greater* postage costs. (5 double sided pages cost \$.44 to mail first class; we do not have enough copies to mail each month to justify media mailing at reduced cost).

For the time being, I will try to accommodate the members by emailing the new, expanded Prospector to all those for whom I have a mailing address, however if any of those members wish to receive the printed version instead please let me know.

Adding to that, should any of the members for whom I only have street addresses, and no email address, finally "go online", and wish to begin receiving their *expanded* edition Prospectors by email, please email me at saylor@redshift.com, and kindly put "PROSPECTOR" in the message box, so I don't mistake your request for spam or junk mail. Which I get a whole bunch of, every day!!!

And my thanks to the members who've already decided to receive email Prospectors...I hope you approve! At this time, there are *42 households* who've gone to emailing!

Hopefully, at some point we can dispense with snailmail altogether, but not this month, not yet.

Speaking of which, there will be- most likely, for some time to come- a very few members who- for one reason or another- *cannot make* the transition, and for *those members* I will continue to publish on paper & see that they get their Prospectors by USPS.

My thanks to you all for your understanding in this transition period, for there are bound to be a few glitches, somehow, in spite of my best efforts.

Cheers,

Rich

PPS: I HAVE BEEN HAVING *INTERMITTENT* PRINTING DIFFICULTIES, SO SOME PAGES MAY BE *LESS THAN PERFECT*. BUT, THERE IS NO TIME LEFT TODAY (THE LAST DAY TO PRINT & MAIL ON TIME) TO ATTEMPT (ANOTHER!) FIX...PLEASE BEAR WITH ME. THE ONLINE VERSION, OF COURSE, HAS NO SUCH DIFFICULTIES... RICH