

The Carmel Valley **PROSPECTOR!**

April
2013
Vol. 53, No. 4



*Newsletter of the
Carmel Valley
Gem & Mineral Society*

*Online &
E-Mail
Edition*

www.cvgms.com

*(Please correspond to
saylor@redshift.com)*

***Our next meeting will be Friday, April 12, at the PG Museum.
Jay, Talma, Matt and Barb will give a presentation and slide show on their
Quartzsite and Tucson rockhounding and shopping trip.***

Elected Officers & Board of Directors- 2013

PRESIDENT	Susie Harlow	637-0735
VICE-PRESIDENT	Margaret Chan	883-2045
TREASURER	Pearl Chan	375-8194

RECORDING SECRETARY	Janis Rovetti	372-1311
CORRESPONDING SEC.	Matt Biewer	659-4156
FEDERATION DIRECTOR	Karin Salomon	375-5233
BULLETIN EDITOR	Rich Saylor	372-9215
DIRECTOR 2013	Jay House	372-1011
DIRECTOR 2014	Talma Taormina	375-1477
DIRECTOR 2015		

Committee Chairpersons- 2013

SHOW	Board of Directors	
PROGRAM	Board of Directors	
FIELD TRIPS	Jay House	372-1011
PUBLICITY	Janis Rovetti	372-1311
DRAWING TABLE	Matt & Barbara Biewer	659-4156
SUNSHINE	Richard & Cynthia Franco	402-2106
REFRESHMENTS	Richard & Cynthia Franco	402-2106
SCHOLARSHIP	Talma Taormina	375-1477
MEMBERSHIP	Jay House	372-1011
CUSTODIAN	Matt Biewer	659-4156
LIBRARIAN	Richard Franco	402-2106
WEBMASTERS	Richard & Cynthia Franco	402-2106

CLUB INFORMATION:

ANNUAL DUES: Adults (21 & over) \$15, Couples \$20, Juniors (high school) \$1, and Pebble Pups (grade school or younger)- Free

INITIATION FEE: \$10 plus \$5 each additional family member (includes "stinkin' name badges!")

MEMBER OF: California Federation of Mineralogical Societies, American Federation of Mineralogical Societies (CFMS & AFMS)

CLUB MINERAL: *Gold* **CLUB COLORS:** *Green & Gold* **CLUB GEMSTONE:** *Botryoidal Jade*

SOCIETY PURPOSE: The Carmel Valley Gem and Mineral Society is a nonprofit organization dedicated to promoting the study of mineralogy and geology, to encourage the collecting of specimens and the practice of the lapidary arts, to promote responsible field excursions to mineral locations, and to further the education of all. **And remember, please...Tread Lightly!**

CLUB NEWSLETTER: Permission is given to *quote* any item in *The Prospector* *provided* proper credit is given. Please contact the editor for permission to reprint original articles in their entirety, which are to be considered as being copyrighted.

Rich Saylor, editor & publisher. Contributions, which are ALWAYS welcome, & (nice!) comments may be sent to saylor@redshift.com

Carmel Valley Gem & Mineral Society general meetings: 2nd Friday, 7:00 PM; guests & visitors are welcome. Board meetings are held at 6:00 PM, before the General Meeting. Members are welcome to attend.

SUPPORT OUR LOCAL CLUBS:

The Santa Cruz Mineral & Gem Society meets on the 2nd Wednesday of each month, at 7:00pm, Live Oak Grange Hall, 1900 17th Ave., Santa Cruz. Their website is www.SCGMS.org for club info & their newsletter, The Lapidarian.

The Salinas Valley Rock & Gem Club meets on the 3rd Monday of each month, at the Veterans Hall in Spreckles, 5th & Llano streets; guests & visitors welcome. For club information & their newsletter, the club website is

www.salinastrockandgem.com. Also contact Karin Salomon, 375-5233. Guests and visitors are welcome. **Annual SVR&G Show: March 9 & 10, 2013, Veterans Hall, Spreckels. Admission will be free, lots of FREE parking.**

2013 CVGMS Tentative Monthly calendar: PLEASE NOTE, ALL DATES TO BE CONFIRMED.

January: Friday the 11th

February: Friday the 8th

March: Friday the 8th.

Sat. March 9: The Newark bus trip has been cancelled. Carpooling is suggested instead.

April: Friday the 12th

May: Friday the 10th

June: **Annual picnic & White Elephant Sale- Sunday, date TBA, Noon (or before), Whispering Pines Park, Monterey (no general meeting)**

July: Friday the 12th

August: Friday the 9th

Sept.: Friday the 13th (General meeting); **53rd ANNUAL CVGMS GEM SHOW, SAT.& SUN. the 28th & 29th**

October: Friday the 11th

November: Friday the 8th - **THE ANNUAL AUCTION!**

December: **Sunday, Dec. 8- 4:30 PM, ANNUAL XMAS DINNER & INSTALLATION OF 2014 OFFICERS**

The Carmel Valley **PROSPECTOR!**

April 2013 Volume 53, Number 4
*By the way, you didn't miss the March issue...
there wasn't any! Sorry.*

PRESIDENT'S MESSAGE

Hi Everyone!

I am glad to be back and look forward to seeing you all this Friday, April 12! And I would also like to thank you for your cards and messages and well wishes! They lifted my spirits and kept me motivated in a slow recovery.

I want to thank all who participated in last month's 'show and tell' and I'm very excited to see our April program which will be a slide show that Matt Biewer put together from their last excursion to Tucson. It is an amazing experience and hopefully for those who have never been, I hope you can enjoy it vicariously and may even be tempted to try and plan a trip to Tucson yourself in the future. It is always the first two weeks of February, so mark your 2014 calenders!

I'll see you Friday, April 12 at 7 pm at the Pacific Grove Natural History Museum!

Susie Harlow, Pres, CVGMS

CVGMS BOARD MEETING: March 8, 2013

Call to Order: Meeting called to order by Vice-President Margaret Chan.

Present: Margaret Chan, Pearl Chan, Talma Taormina, Adrienne Pimentel, and Janis Rovetti.

Membership: Jay is in Tucson and reports no new members.

Treasurer's Report: Pearl gave the treasurer's report. It was M/S/P to pay the current bills.

Federation: The CFMS Show is in Ventura from May 31 to June 2, 2013.

Correspondence: Both the Spreckels Show and the Turlock Show is March 9 to 10.

Scholarship: Talma's has several school presentations scheduled this spring.

Sunshine: Susie Harlow is recuperating from a heart attack! We wish you a speedy recovery Susie and want you back soon!

New Business: There will be a workshop at the Biewer's on Sat and Sun April 13 and 14. Bring your own lunch and have fun!

April Program: Jay, Talma, and Matt and Barb will give a presentation and slide show on their Quartzsite and Tucson rockhounding and shopping trip.

May Program: Margaret will have a DVD on the Grand Canyon.

June Picnic: Our annual picnic at Whispering Pines on June 9, 2013.

The meeting was adjourned. The next board and general meeting is April 12 , 2013.

Janis Rovetti, Recording Secretary

PEBBLE PUPS & Jr. ROCKHOUNDS:

Hey Pebble Pups and Junior Rockhounds,

This month the regular meeting will be a show-and-tell by those of us who went to the Tucson Show this year. And I have something, for all of you, that I bought there. It's from Madagascar and it's 20 million years old. Hope you can make it to the meeting.

Talma Taormina

April Program

The program at the April meeting will be show and tell and a photo presentation of the field trip to Quartzsite and Tucson taken by Matt and Barb Biewer, Jay House, Janis Rovetti, Talma Taormina and Donna Zahn.

April Workshop

A lapidary workshop is scheduled for Saturday April 13 and Sunday April 14 at the Biewer's shop in Carmel Valley; this will be the day after this coming Friday's meeting. The schedule is 10:00 am to 4:00 pm. Come either day or both days and come early and stay late. Remember to bring a lunch. Bring your own stones to cut and polish or select something from the club rock pile or the available slabs and preforms. Come to learn or come to teach or just come to get a project done.

The stone carving group will be working with their machines in the house on Saturday.

CLUB SPECIALISTS *Rich Saylor*

I've noticed that some other clubs list certain of their members as being "club specialists", such as the following typical categories:

Fossil Preparation, Fused Glass, Opal Cutting, Lapidary, Beading, Wire Wrapping, Cuttle Bone Casting, Tumbling, Faceting, Inlay (Intarsia), Zeolite Minerals, Lost Wax Casting, Sphere Making, Workshop design & construction, Silver Fabrication/Silversmithing, Jade Carving, Mineral Collecting & Identification, and Scrimshaw, to name a few.

Of course, only very large clubs are likely to have such a complete "roll call" of expertise, but nevertheless we are all a resource to each other, one way or another. So, I'd like to have those interesting in assisting others to learn the ins & outs of their particular areas of interest in signing up, if they're willing to share their time & knowledge.

Please let me know if you'd like to participate- either by email (saylor@redshift.com) or by phone, 372-9215.

Cheers, Rich



FROM THE EDITOR, ROCK & GEM MAGAZINE:

Would you encourage your club members to submit projects to our Lapidary of the Month contest for *Rock & Gem* magazine? All I need is a clear high-resolution photo of the finished project and 300 to 400 words describing how it was made. The project doesn't have to be complicated, just involve lapidary. I will even allow them to submit by e-mail.

I have nothing to run in the December issue or future issues. This is a sure-fire way to win a Dremel tool kit and personalized plaque. I need to receive something by October 17. (*Ed: I'm sure he's still open to submittals!*) Thanks for anything you can do,

Lynn Varon, Managing Editor, Rock & Gem magazine, 3585 Maple St., Ste. 232 Ventura, CA 93003
(805) 644-3824 ext. 129 www.rockngem.com

STUFF FOR SALE...

Used Slab saw for sale, looks like an old Covington. It is a 14" with a good motor. The vice is good and the auto feed is brass so no rust. It is mounted on a wheel around stand but could easily be placed on a bench top. The owner is asking a reasonable \$400. He is motivated to sell so go take a look and make an offer. He just wants to have it moved. Call Kim Pisor @ 831 484-9694 Sky Paxton Cell 831 262 8044 Fax 831 427 7588

NOTE: *There's a new Facebook group called "lapidary swap shop ", designed for people that have lapidary equipment, rocks, findings , fossils, gems, rough material, minerals, crystals or anything used in the lapidary trade that they don't need and are willing to trade. Go to facebook and type in "lapidary swap shop".*

Vendor Invitation to Mariposa Gem & Mineral Show:

The Mariposa Gem & Mineral Club, in conjunction with the California State Mining & Mineral Museum (yes! it is back open after the robbery), would like to invite vendors to participate in our Mountains of Minerals Gem & Mineral show April 13th & 14th, 2013. We are expanding our show area this year to include both indoor and outdoor booth space and would like new vendors to participate, as well as our much appreciated return vendors. Our show is located at the Mariposa County Fairgrounds in Mariposa, CA, home of the California State Mining & Mineral Museum. We do not charge admission to our show, we offer free parking, and the museum offers free admission during the show. This encourages the public to spend money with our vendors. Our shows typically have very good attendance as we advertise heavily in the area and in the Central Valley (Fresno, Madera, Merced).

The (usually) mild spring weather in the Sierra Nevada foothills brings many local people to community events since it is before "tourist" season. We are 45 minutes from Yosemite National Park. Come join us and sell your jewelry, specimens, tools, slabs, beads, or whatever else you might have, then enjoy a visit up to the park and see the beautiful Yosemite Valley.

If you're interested in reserving booth space, please send us an email with your complete mailing address, a brief description of your products, and if you are interested in an indoor or outdoor booth, and we will send you a vendor packet. mgmc@sti.net

MESSAGES

Hi all,

After the recent Salinas club (i.e. Spreckles) show, Ken Orndorff reports that his Craftsman 18 v. drill is missing. PLEASE, if you saw it or know where it might be, let him know.
Thanks, Karin

--- On Tue, 4/9/13, Kenneth Orndorff Owner <cko.1@centurylink.net> wrote:

When I got home I wasn't feeling too well so didn't go through my stuff till this week. I seem to have lost my craftsman 18 volt drill. Probably someone borrowed it to take apart the cases. Please ask around at the meeting and let me know. The last I remember seeing it, it was laying on the stage. I thought I put it in a box.

Thanks, Ken

GUEST SPEAKERS WANTED

Hi there-

I teach 2nd Grade and we just began our unit on Rocks and Minerals. I discovered about your website from a little exhibition at the Monterey Public Library and would love to have one (or more) guest speakers come to teach us a little something or show us some neat rocks and minerals! Would there be someone in your group willing to come in and talk to two 2nd Grade classes?

Thanks!

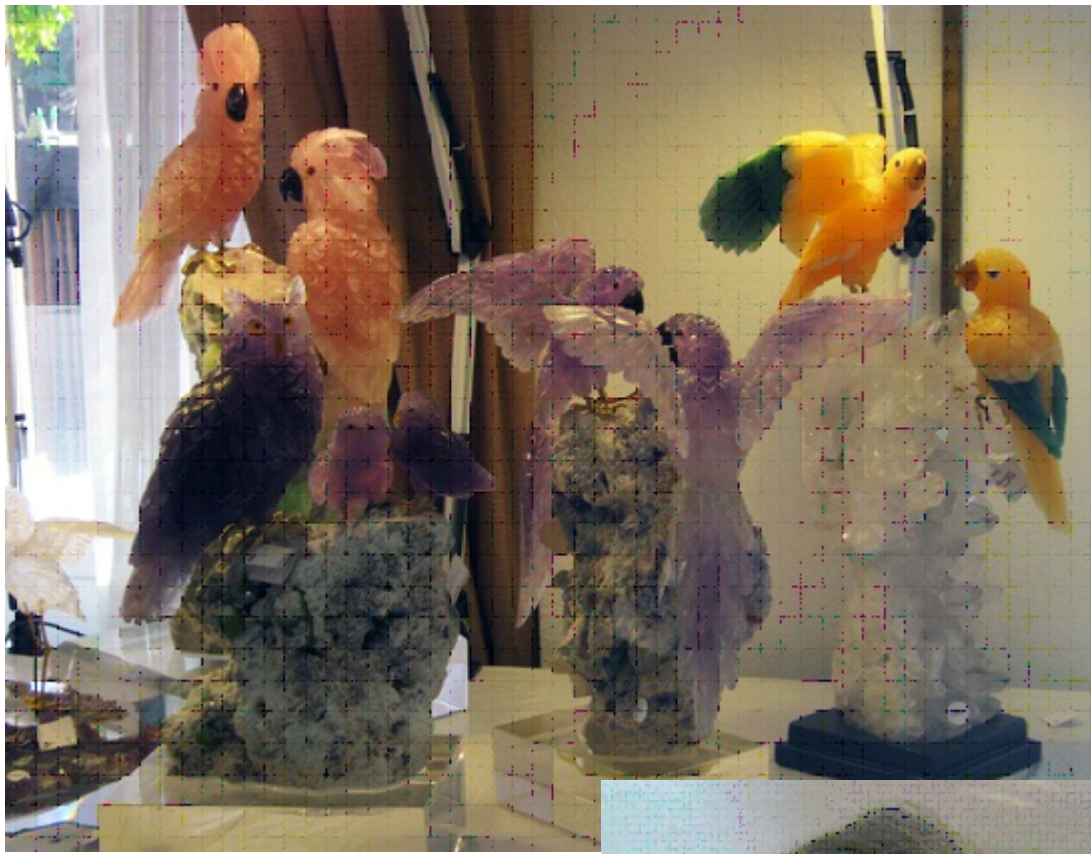
Kellie Simms, 2nd Grade Teacher, Bay View Academy
222 Casa Verde Way, Monterey, CA www.bayview-academy.org



Talma between
a citrine geode,
quartz crystals
and an amethyst
'plate' with
calcite crystals.



One of the hundreds of tents with vendor after vendor.....notice the apatasaurus
(formerly called brontasaurus).



The pink parrots are about 18" tall
and all the birds are close to life size.



Susie Harlow and Peter Mueller, who carves Jay's amazing birds.

SCVGMS Club Bus Trip to Mariposa Show

Date: April 14, 2013

Cost: \$25.00/ adult, \$15.00/ junior
Actual cost is over \$55.00 per attendee,
SCVGMS is covering the difference.
Leaving San Jose at 8 AM (location to be
determined)

Arriving in Mariposa at approximately 11
AM

Leaving Mariposa at 3 PM

Arriving in San Jose at approximately 6
PM

You will responsible for your show and museum entry fees and food.

Gratuity: You will be expected to pay a \$5.00 gratuity before leaving for Mari-posa.
Please come prepared. Dean Welder will be collecting the gratuity before you board
the bus.



Deadline for sign up and payment: March 1, 2013. First come first served.

Cancellation policy: You will get a full refund only if SCVGMS has to cancel the trip.
But if you should have to cancel your participation, you will have to find someone to fill
your spot and they can pay you directly. Otherwise no re-funds. Please inform Dean
Welder of any changes to the list of attendees.

Sign up form for Mariposa Show bus trip.

Please send form and check (made payable to SCVGMS) to: Dean Welder,
22682 Summit Rd., Los Gatos, CA 95033 phone (408) 353-2675

Name of attendees: _____

Number of Adults (over 17 years of age) ____X \$25.00 _____

Number of Juniors (under 18 years of age) ____X \$15.00 _____

Total payment enclosed _____

Reservations are not complete without total payment.

Deadline for reservations: March 1, 2013

SCVGMS Bus trip to Mariposa Show

Santa Clara Valley Gem and Mineral Society
San Jose, CA

UPCOMING EVENTS:

Only club and Federation shows in California (CA), & selected nearby shows in Oregon (OR), Nevada (NV) Washington State (WA) & Arizona (AZ) are listed, due to space limitations. For more information & other out-of-state listings, please go to: rockngem.com/showdates or cfmsinc.org PLEASE NOTE THAT COMMERCIAL (non-club) GEMSTONE/JEWELRY/BEADING SHOWS such as Gemfaire, Crystalfair, Martin Zinn Expositions, and others are generally not listed, since there are so many, but can be found at the above websites. Please confirm all show dates- Ed.

April 2013

12-14—EUREKA, CALIFORNIA: Eureka Gem, Jewelry, Bead & Mineral Show; Crafty Cat Events; Redwood Acres Fairgrounds; Harris St.; Fri. 12-7, Sat. 10-6, Sun. 10-5; \$3, seniors and students \$1.50 with ID, children (12 and under) free with adult; contact Johnita Wemken, PO Box 704, Penryn, CA 95663, (916) 212-1647; Web site: www.craftycatevents.com

12-14—VISTA, CALIFORNIA: Annual show; San Diego County Council; Antique Gas and Steam Engine Museum; 2040 N. Santa Fe Ave.; Fri. 9-?; free admission; jewelry, books, slabs, cabs, new and used equipment, rough material, lapidary-related items; contact Ray Pearce, 753 Abbywood Dr., Oceanside, CA 92057, (760) 726-7570; e-mail: raysrocks@cox.net

13-14—MARIPOSA, CALIFORNIA: Annual show; Mariposa Gem & Mineral Club; Mariposa County Fairgrounds; 5007 Fairgrounds Rd.; Sat. 10-6, Sun. 10-5; free admission; guest speakers, dealers, silent auctions, raffle; contact Nikki West, 4166 Sullivan Rd., Mariposa, CA 95338, (209) 742-4234; e-mail: nwest2006@yahoo.com

13-14—PARADISE, CALIFORNIA: Annual show; Paradise Gem & Mineral; Elks Lodge; 6309 Clark Rd.; Sat. 10-5, Sun. 10-4; adults \$2, seniors (65+) \$1, children (16 and under) free; Jade of Northern California; contact Manuel Garcia, 5659 Foster Rd., Paradise, CA 95969, (530) 877-7324; e-mail: mmpg@att.net; Web site: paradisegem.org

20-21—SAN JOSE, CALIFORNIA: Annual show; Santa Clara Valley Gem & Mineral Society; Santa Clara County Fairgrounds; 344 Tully Rd.; Sat. 10-6, Sun. 10-5; adults \$6 (discount coupon on web site), children (under 12) free; dealers, kids' educational area, Scout badge programs, demonstrations, flint knapper, gold panning, guest speakers, door prizes, personal displays; contact Frank Mullaney, 5705 Begonia Dr., San Jose, CA 95124-3565, (408) 265-1422; e-mail: info@scvgms.org; Web site: www.scvgms.org

May 2013

3-5—BISHOP, CALIFORNIA: Annual show; Lone Pine Gem & Mineral Society; Robinson Bldg.; Sierra St. and Fair Dr.; Fri. 6-9, Sat. 9:30-5, Sun. 9:30-3; free admission; dealers, demonstrators, field trip, children's activities, door prizes, drawing; contact Steve Mobley, Lone Pine, CA 93545, (760) 793-6025; e-mail: steve@littlebearsteve.com

4-5- LINDSAY, CA Equipment and Earth Science Play Day. Tule Gem and Mineral Society and Diamond Pacific Tool Corporation invite you to attend "EARTH SCIENCE PLAY DAY"; TIME: 9:00AM – 5:00PM

LOCATION: Meet us at the country ranch of the famous sphere maker and jade collector, Tony Hart and his wife Kathy. Enjoy the hospitality with barbecue provided by Don Depue of Diamond Pacific.

DIRECTIONS: To 1381 N Strathmore Ave in Lindsay, CA = from south of Lindsay, on Hwy 65 turn east on Road 208 for 1.1 miles to Rd 228 (Strathmore Ave) turn left, going north 3.7 miles to location at end road.

EVENT: For the people that are interested in lapidary arts, this is a one-of-a-kind event that allows for a hands-on opportunity to see and use some of the newest and best tools and equipment for cutting, shaping and polishing stone. It is hosted by the Tule Gem and Mineral Society and the Diamond Pacific Tool Company. Diamond Pacific, with over 40 years of tool manufacturing experience, has been a leading supplier of quality equipment for commercial applications and the hobbyist.

There will also be staff present to help teachers who instruct earth science classes in identifying rocks. We will also have instructors to give in-class presentations for the purpose of helping students meet California mandated education requirements. There will also be sample specimens available including igneous, metamorphic and sedimentary rock. SEE AND USE: Bigfoot, Genie and Titan grinders / polishers, Taurus II ring saw, Band saw, 18" rotating flat lap with magnetic diamond grit laps, 18" Swing Arm Saw, Mini-Sonic vibratory tumblers, Foredom power tools, including Nova miniature sanding and polishing points for carving stone, the "sculpture rock lathe, adhesives for rocks and new polishing compounds.

LEARN: From some of the best instructors of earth sciences and the lapidary arts with demonstrations in cutting, shaping, polishing and preserving a variety of rock specimens. There will be a special demonstration making art out of rocks, using the trim saw as grinding tool and using carving tools.

ARTISTS' CRAFTS & ROCK SALE: Equipment, jewelry and other lapidary arts and crafts will be on display and for sale. Tailgaters welcome.

For more information contact: Rob Milner, Phone: 559 359-6174, Email: ag4u@att.net; Web site: www.tulegem.org.
4-5—ANAHEIM, CALIFORNIA: Annual show; Searchers Gem & Mineral Society; Brookhurst Community Center; 2271 W. Crescent Ave.; Sat. 10-5, Sun. 10-4:30; free admission; silent auctions, Wheel of Fortune, children's jewelry making, demonstrations, display cases, dealers, lapidary, tools, fossils; contact John Walker, (503) 703-9465; e-mail: john_walker@juno.com; Web site: www.searchersrocks.org

4-5—PASO ROBLES, CALIFORNIA: Annual show; San Lucia Rockhounds; Pioneer Park & Museum; 2010 Parkside Ave.; Sat. 9-5, Sun. 9-5; free admission; dealers, demonstrations, drawing, silent auction, kids' activities; contact Kim Noyes, [REQUIRED]; e-mail: kimnoyes@gmail.com; Web site: www.slrockhounds.org

4-5—YUCAIPA, CALIFORNIA: Annual show; Yucaipa Valley Gem & Mineral Society; Scherer Center; 12202 First St.; Sat. 10-6, Sun. 10-5; free admission; displays, kids' activities, silent auction, raffle, 18 dealers, beads, jewelry, rough rock, books, in conjunction with the Yucaipa Arts and Crafts Fair; contact Lee Peterson, 31059 Nice Ave., Mentone, CA 92359, (909) 794-0731; e-mail: res09ayd@verizon.net; Web site: <http://yvgms.org>

25-27—JUNCTION CITY, CALIFORNIA: 31st Annual Bigfoot Gemboree; Trinity Gem & Mineral Society; North Fork Grange Hall; 131 Dutch Creek Rd.; Sat. 10-5, Sun. 10-5, Mon. 10-4; free admission; gems, minerals, fossils, rock products, raffle, drawings, demonstrations, exhibits, children's activities, indoor dealers, outdoor tailgaters; contact Lucy DeMaris, c/o TG&MS, PO Box 159, Weaverville, CA 96093-0159, (530) 623-1183; e-mail: TrinityGemAndMineral@Peoplepc.com

May 2013-June 2013

31-2—VENTURA, CALIFORNIA: 76th Annual Show & Convention; California Federation of Mineralogical Societies; Ventura County Fairgrounds; 10 W. Harbor Blvd.; Fri. 10-5, Sat. 10-5, Sun. 10-4; adults \$5 (3-day pass \$12), seniors \$4 (3-day pass \$10), students (age 13-17) \$3, children (under 12) free with adult; "California Rocks", displays, gems, minerals, fossils, lapidary arts, Natural History Museum of Los Angeles County exhibit, competition exhibits, speakers, ongoing jewelry-making demonstrations, raffles, silent auctions, more than 50 dealers, children's activities, dinosaurs; contact Rob Sankovich, 1961 Havenwood Dr., Thousand Oaks, CA 91362, (805) 494-7734; e-mail: rmsorca@adelphia.net; Web site: www.cfms2013.com

“GEOLOGY OF WINES” TOURS

TOPS, A Rock Shop, located in San Juan Bautista just a couple of hundred feet from the San Andreas fault, has launched a new FUN tour, the Geology of Wines Tour. Fossil Phil (Stoffer, Ph.D.), retired USGS Geologist, hosts a bus tour of the faults in San Benito County stopping at various award winning wineries where you can either taste the Fruits of the Fault or go for a walking tour with Phil. These tours are scheduled once a month or if you have a group of at least 16 we can schedule a custom tour tailored to your interests and knowledge level. Jan McClintock, TOPS A Rock Shop jan@topsarockshop.com 831-207-7111